



GLIMPSES OF ...

HALLS, AUDITORIUM, PLACEMENT AREAS & STUDIO 401

Annexure "B" to CU/PB/Admin/2/2022

INDEX

VENUE	PAGES
EINSTEIN HALL	Pages 3 to 6
EXPLORETORIUM	Pages 7 to 10
FARADAY HALL	Pages 11 to 15
PIERRE HALL	Pages 16 to 19
PLATO HALL	Pages 20 to 23
PULITZER HALL	Pages 24 to 29
SUN HALL	Pages 30 to 35
WARREN BUFFET HALL	Pages 36 to 40
SUN PLACEMENT AREA	Pages 42 to 48
MOON HALL PLACEMENT AREA	Pages 49 to 52
PICASSO PLACEMENT AREA	Pages 53 to 57
STUDIO 401	Pages 58 to 62

EINSTEIN HALL



**GALILEO BLOCK,
GROUND FLOOR**



**CHAIRS SEATING,
CAPACITY - 200
ONE ROW SOFA - 14 SEATS**





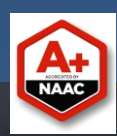


EXPLORETORIUM

FIXED SEATING,
THEATRE STYLE,
CAPACITY - 800

STAGE - 2 PARTS
AUDIENCE SEATING - 2 PARTS
2 ROWS OF SOFA - 48 SEATING





CHITKARA UNIVERSITY 



FARADAY HALL



EDISON BLOCK , 2ND FLOOR



FIXED SEATING, WITH DESKS
CAPACITY - 190



REDMI NOTE 9
AI QUAD CAMERA



REDMI NOTE 9
AI QUAD CAMERA





REDMI NOTE 9
AI QUAD CAMERA

PIERRE HALL

**LE CORBUSIER BLOCK,
GROUND FLOOR**

FIXED SEATING, WITH DESKS
CAPACITY - 120
ONE ROW SOFA - 9 SEATS

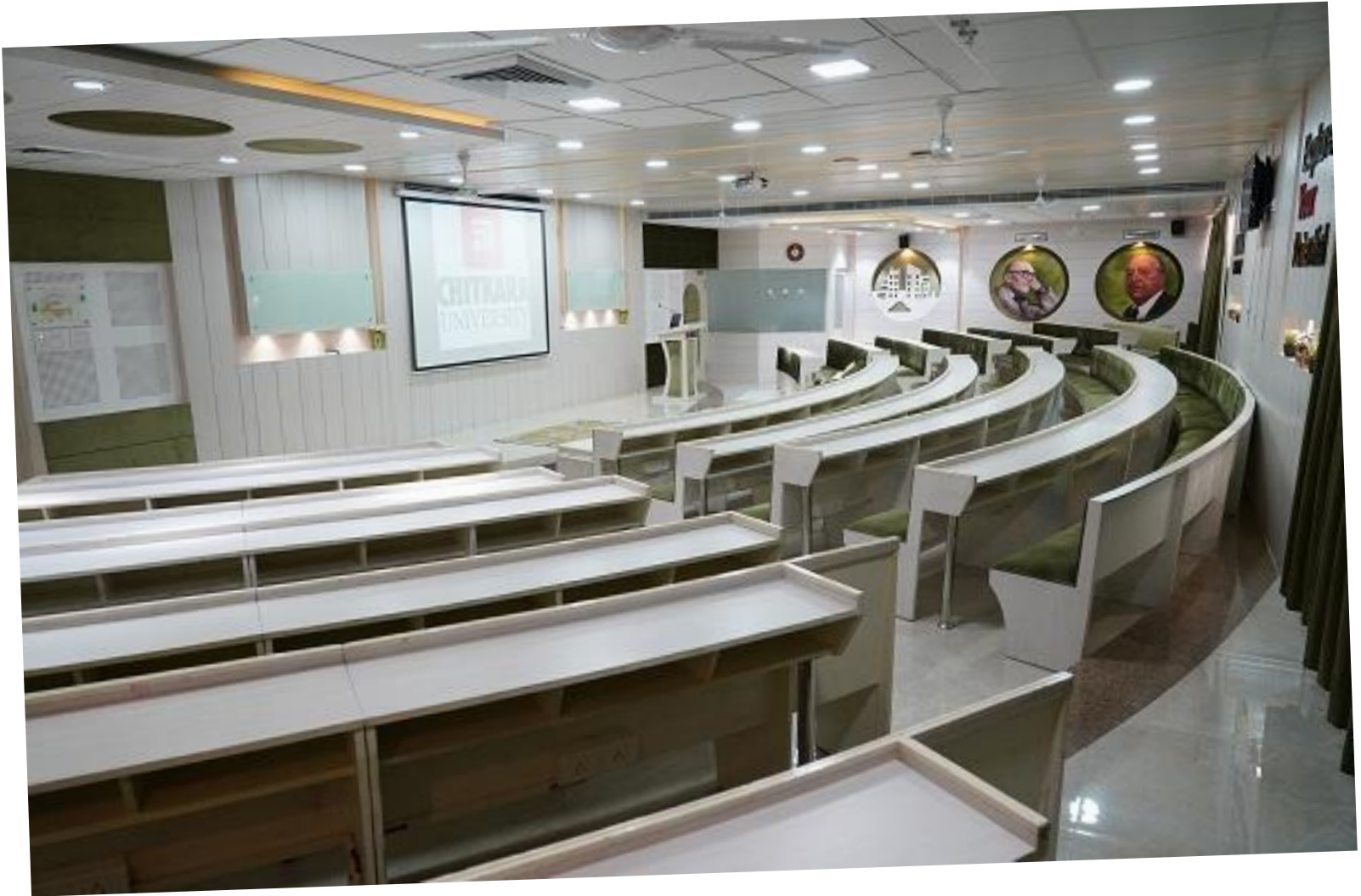


CHITKARA
UNIVERSITY



Explore
Your
Potential







PLATO HALL



SQUARE ONE, 2ND FLOOR

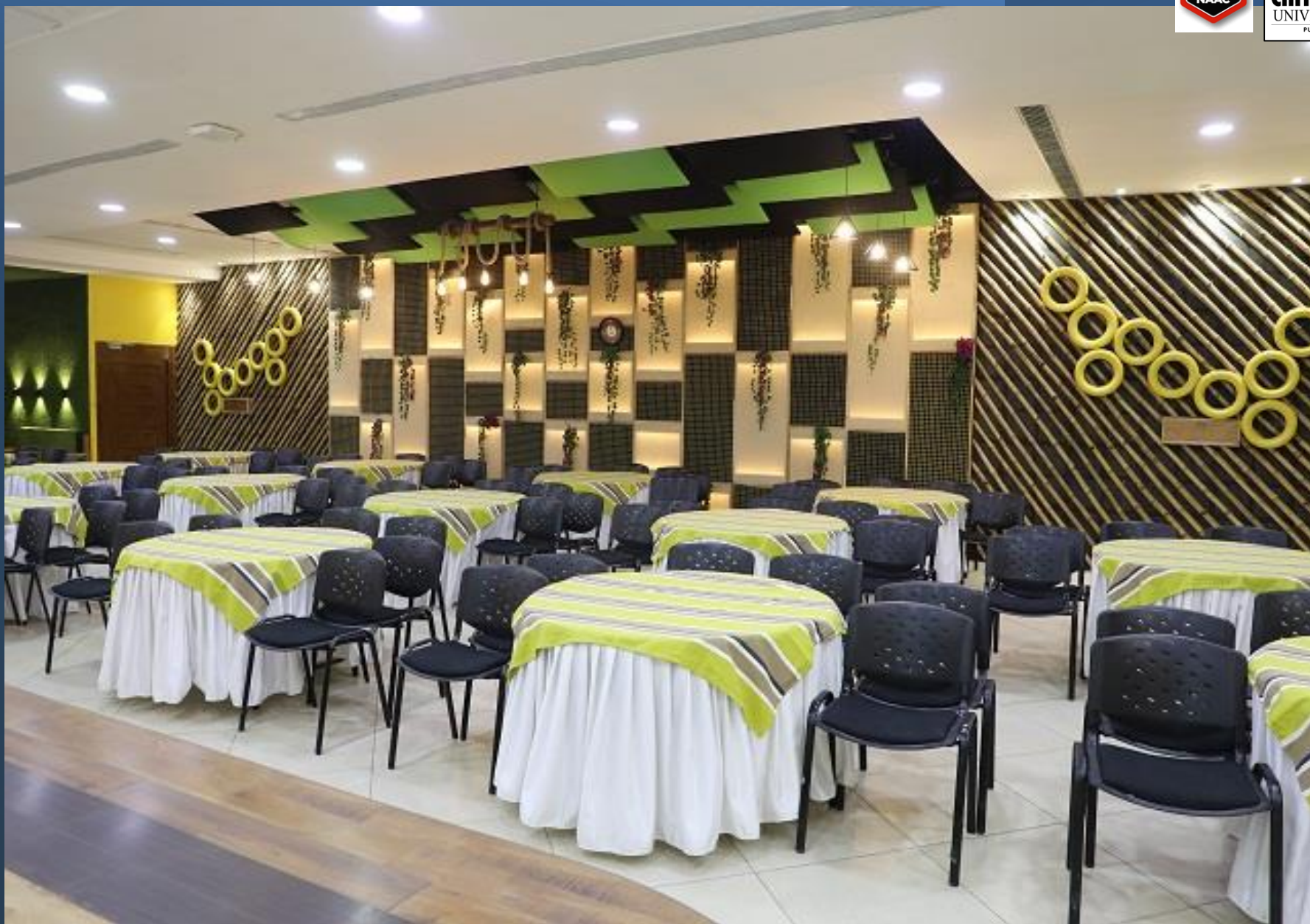


ROUND TABLE SEATING -96 +24

THEATRE SEATING - 120

FOUR SOFAS AVAILABLE







PULITZER HALL

PICASSO BLOCK, GROUND FLOOR

FIXED SEATING, THEATRE STYLE
CAPACITY -193











WARREN BUFFETT HALL

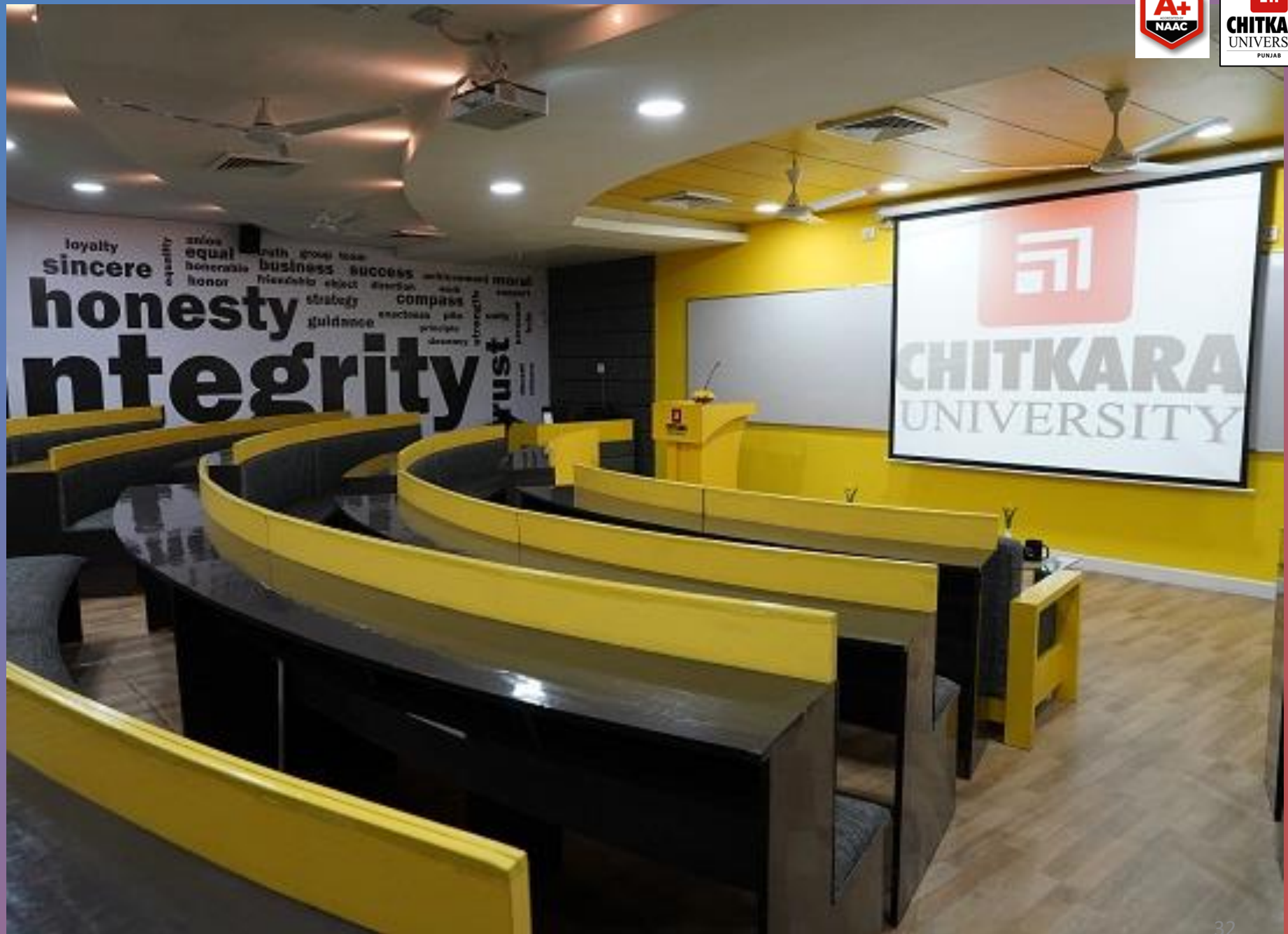


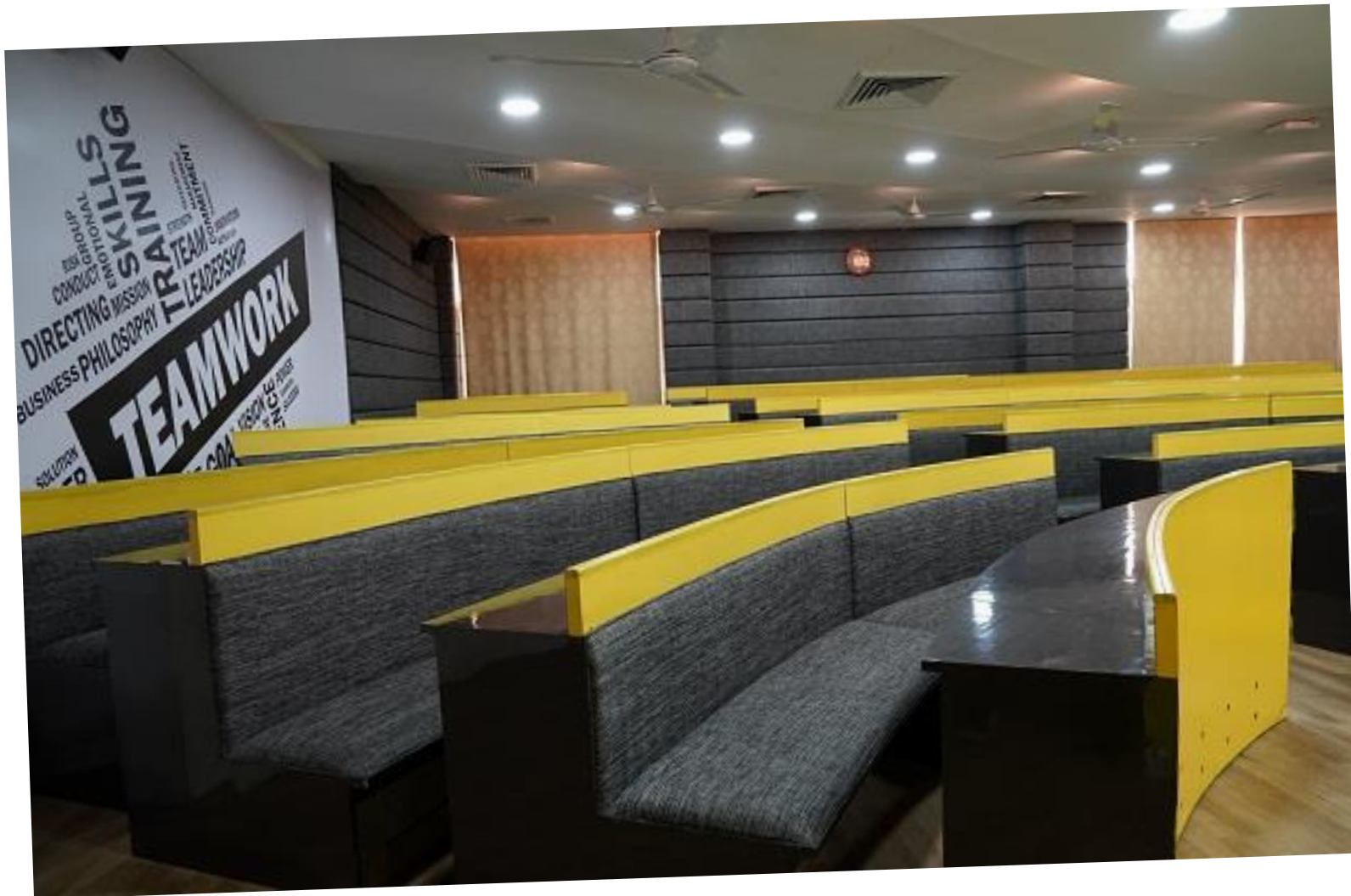
FLEMING, 3RD FLOOR



FIXED SEATING, WITH DESKS
CAPACITY - 150
TWO SOFAS AVAILABLE







SUN HALL

TURING , 1ST FLOOR

FIXED SEATING, WITH DESKS
CAPACITY - 200
ONE ROW OF SOFAS - 12 SEATS













CAREER ADVANCEMENT / PLACEMENT AREAS

Sun Placement Area

Moon Hall

Picasso Placement Area



SUN PLACEMENT AREA

Includes a Group Discussion Room, two Lounges (one lounge includes Conference room setup) , seven Interaction Rooms and a Dining area

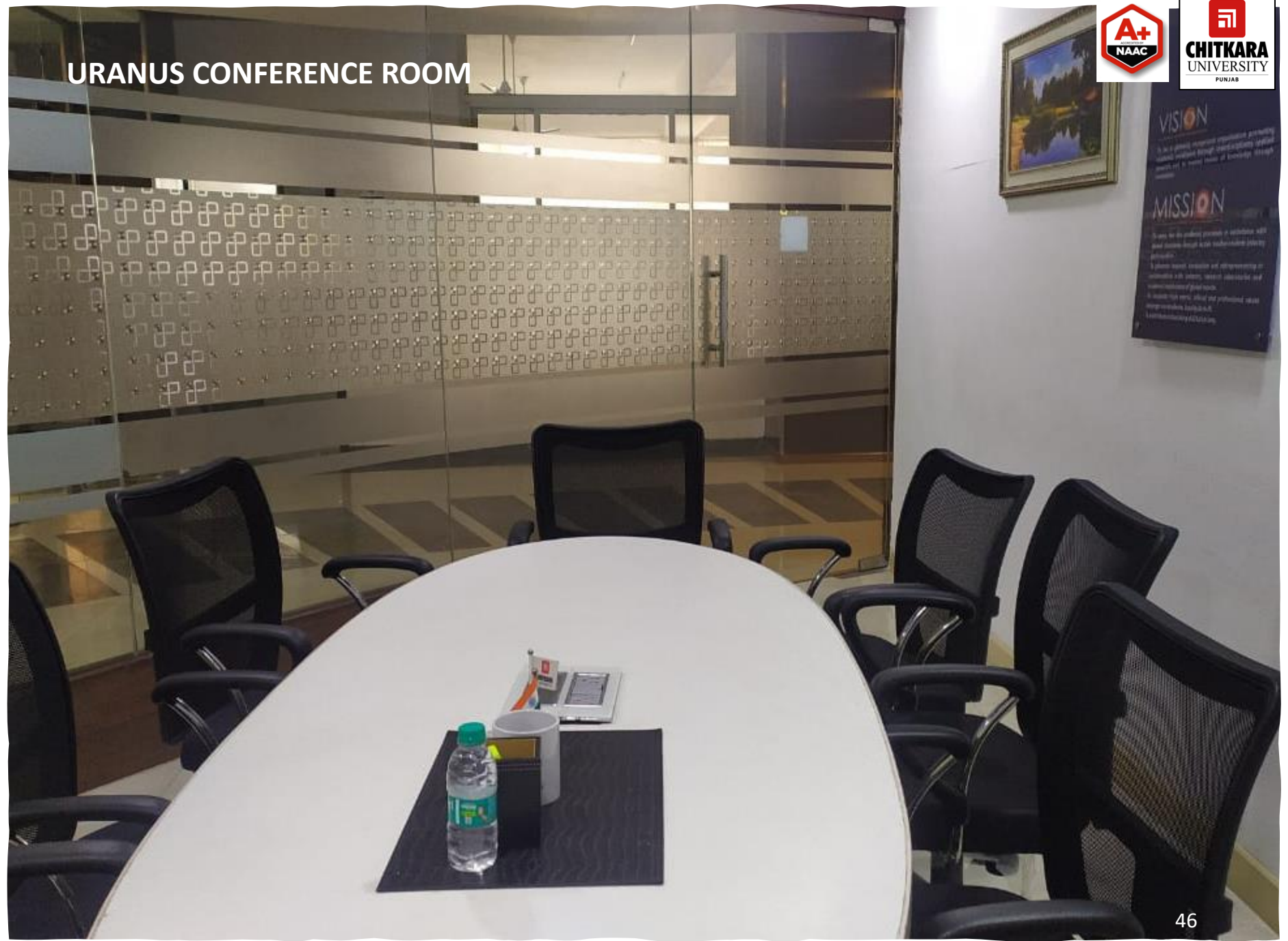
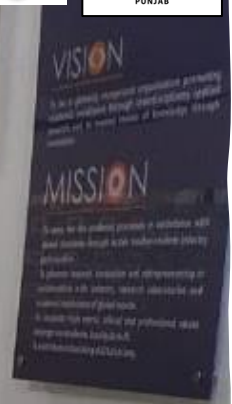


JUPITER CONFERENCE ROOM

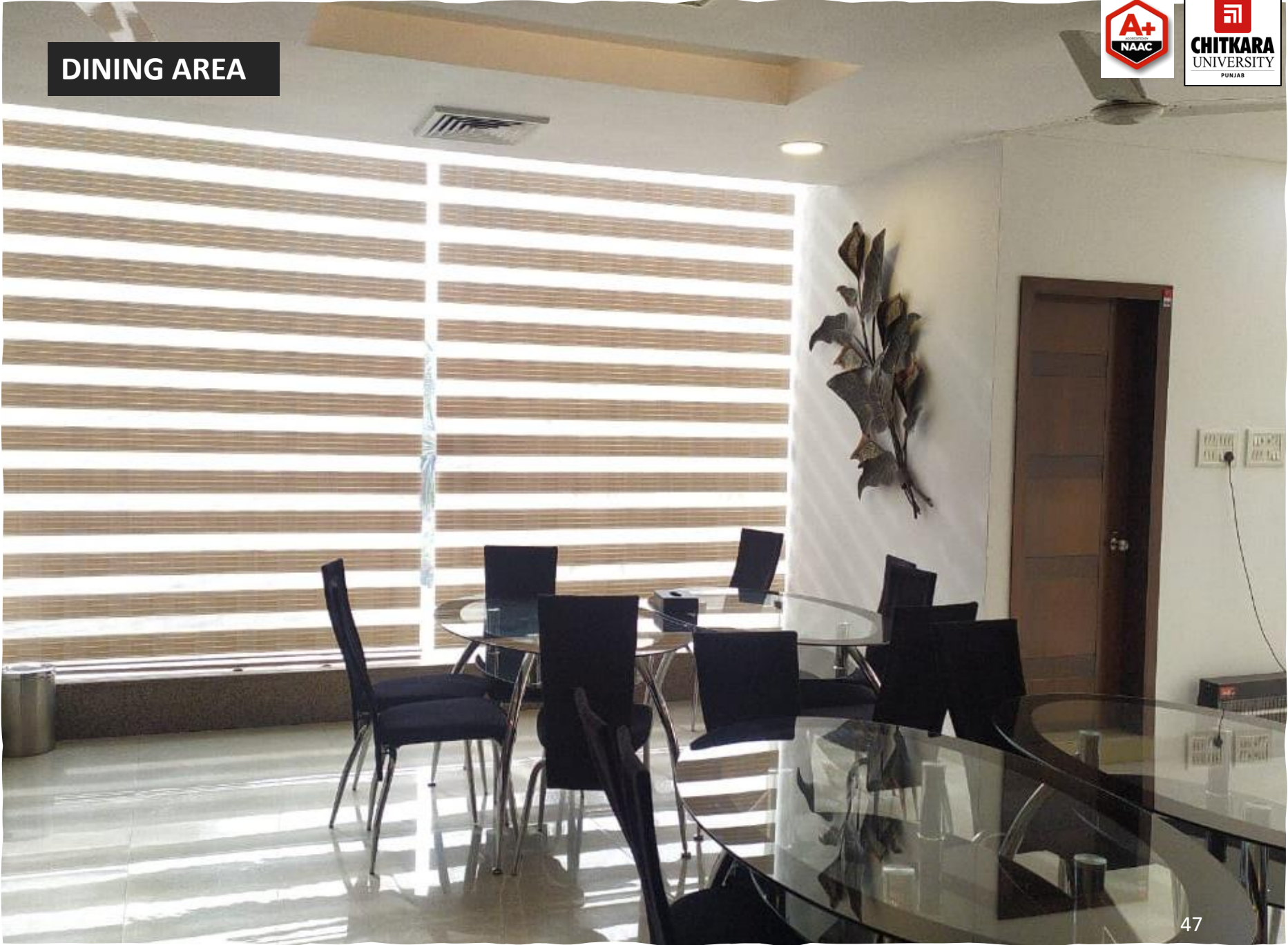




URANUS CONFERENCE ROOM



DINING AREA

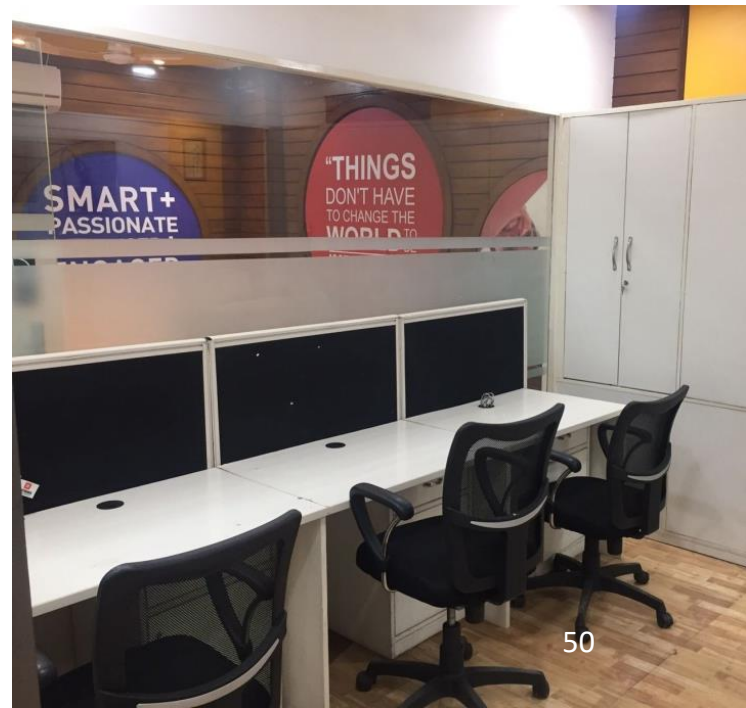


MOON HALL (PLACEMENT AREA)

Includes a Lounge, two Conference Rooms ,
three Interaction Rooms and an Office

MOON hall











PICASSO PLACEMENT AREA

**(includes 6 Interaction Rooms, 1 Conference Room
and 1 Reception, 1 Lounge and Dining Area)**









STUDIO 401

EDISON, GROUND FLOOR

ONLINE INTERACTIONS

FOR BOOKINGS - IT DEPT.

FOR SETUP - ADMINISTRATION







